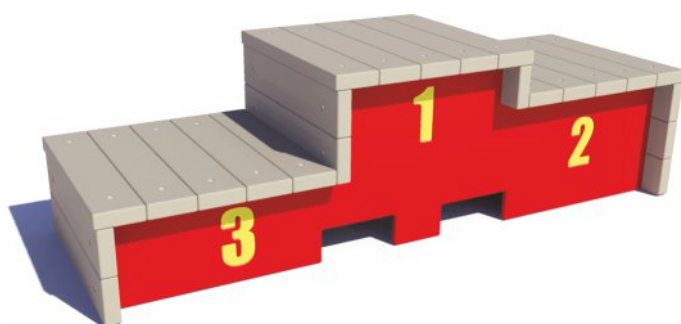
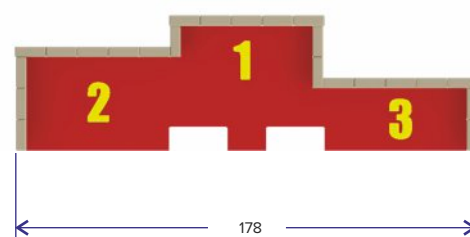


According to EN1176, this podium is not considered as being a play equipment. Therefore, a TÜV-certificate is not required.



+/- 78 kg



Material

- Solid posts and planks made of recycled plastic (PE), coloured throughout.
- Stainless steel screws and nail plugs
- Virgin PE sheets (19 mm), UV-resistant

Mounting

The Podium is delivered fully assembled.

Maintenance

Maintenance of the recycled plastic material is very limited. Cleaning with a soapy water and a sponge or soft brush. Rinse with water to remove all dirt and soap. As the water absorption of the material is less than 0,29%, it will not get stained by oil, grease and other products. Besides, mosses and algae will have difficult to adhere to the material and are very easy to remove. Cleaning with high-pressure (max. 100 bar) is possible but is not recommended and mostly not needed. If anyway, then spray with a fan-shaped jet at minimum 30 cm from the plastic surface.

Painting or staining is useless as the paint will not stick attach to the material.

Installation

The Podium is delivered fully assembled. Anchorage on a hard surface is easy using the plastic blocs and nail plugs. When supervision of the playground is assured it is not necessarily required to anchor the Podium.

This equipment is not suited to be installed on a loose underground (e.g. sand, bark, woodchips, ...).

No need for safety zone and safety surface

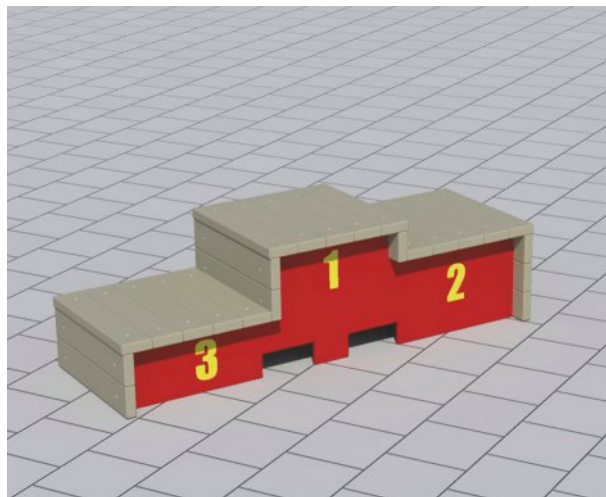
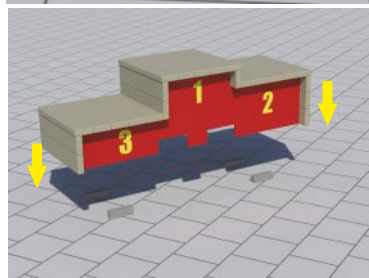
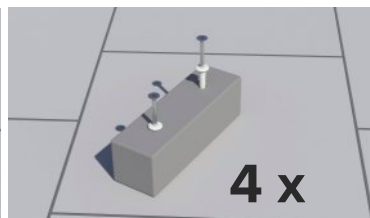
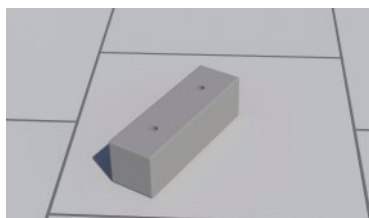
As this product is being considered as furniture there is no need to respect a safety zone. A safety surface is also not requested.



Anchorage

Can be done as follows:

- Position the Podium on its exact place
- Mark the perimeter of the Podium
- Fix the 4 plastic blocs onto the surface using the nail plugs in the way that the Podium just fits over these blocs.
- Put the Podium over the blocs
- Drill the holes (4 mm drill bit) for the screws into the Podium and fix the screws.



Important suggestion

To drill the holes in the ground, use a sharp drill and just put the plastic plug into the hole. It is better to screw the nail into the plug than to hammer. This way, you don't damage the head of the nail and unfixing will be easy.