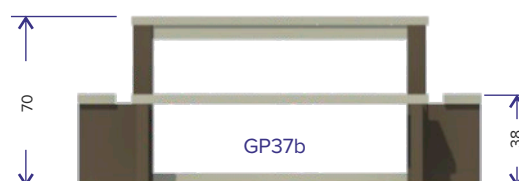
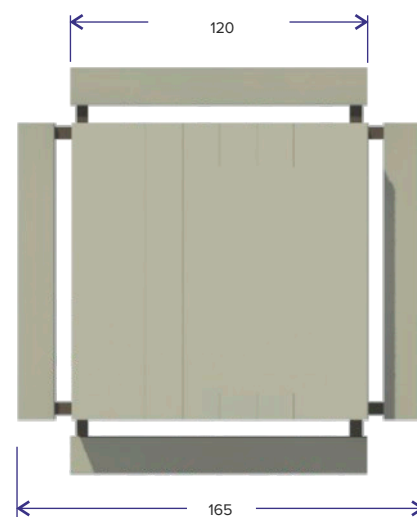


According to EN1176, this bed-bench is not considered as being a play equipment. Therefore, a TÜV-certificate is not required.



+/- 131 kg



## Material

- Solid posts and planks made of recycled plastic (PE), coloured throughout.
- Stainless steel screws and nail plugs

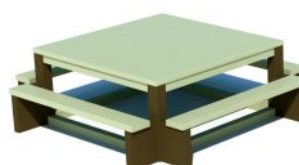
## Mounting

The Planter-bench GP33 is delivered fully assembled.

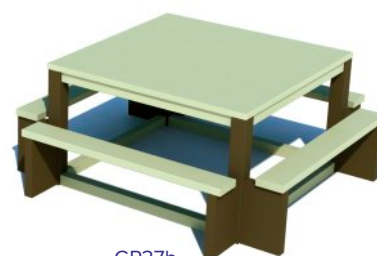
## Maintenance

Maintenance of the recycled plastic material is very limited. Cleaning with a soapy water and a sponge or soft brush. Rinse with water to remove all dirt and soap. As the water absorption of the material is less than 0,29%, it will not get stained by oil, grease and other products. Besides, mosses and algae will have difficult to adhere to the material and are very easy to remove. Cleaning with high-pressure (max. 100 bar) is possible but is not recommended and mostly not needed. If anyway, then spray with a fan-shaped jet at minimum 30 cm from the plastic surface.

Painting or staining is useless as the paint will not stick attach to the material.



GP37a



GP37b

## Installation

The Picnic table GP37 is delivered fully assembled. Anchorage can be done using the nail plugs. Anchorage on a playground with permanent supervision is not necessarily required.

This equipment is not suited to be installed on a loose ground (e.g. sand, bark, woodchips, ...).

## No need for safety zone and safety surface

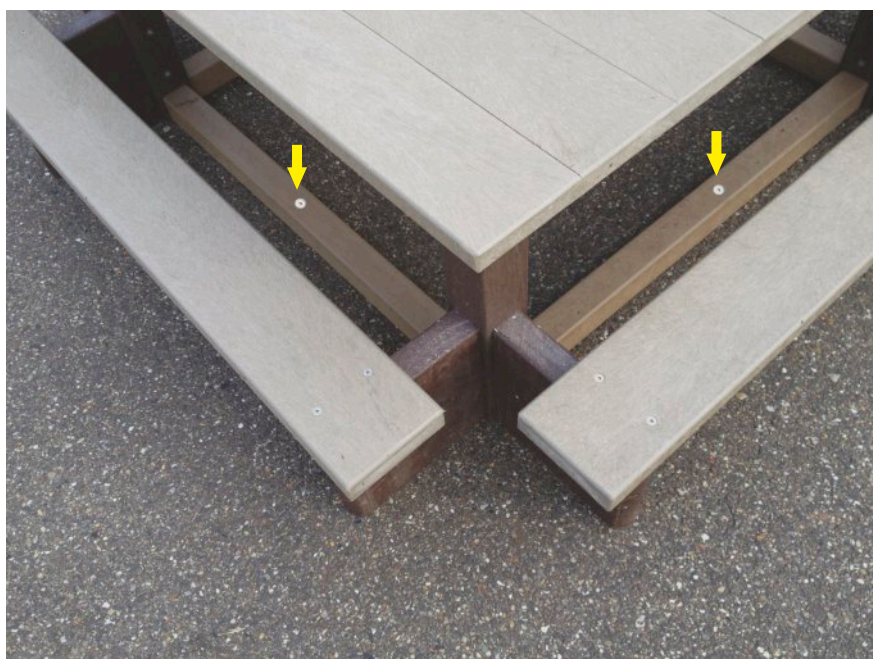
As this product is being considered as furniture there is no need to respect a safety zone. A safety surface is also not requested.

4 x



### Anchorage

- Position the table on its exact place on a hard and flat surface
- Mark the perimeter of the table
- Mark the 4 holes, which are pre-drilled in the lower beams, onto the surface
- Drill the holes (8 mm drill bit) for the screws
- Put the table on its place and fix the 4 nail plugs



### Important suggestion

To drill the holes in the ground, use a sharp drill and just put the plastic plug into the hole. It is better to screw the nail into the plug than to hammer. This way, you don't damage the head of the nail and unfixing will be easy.