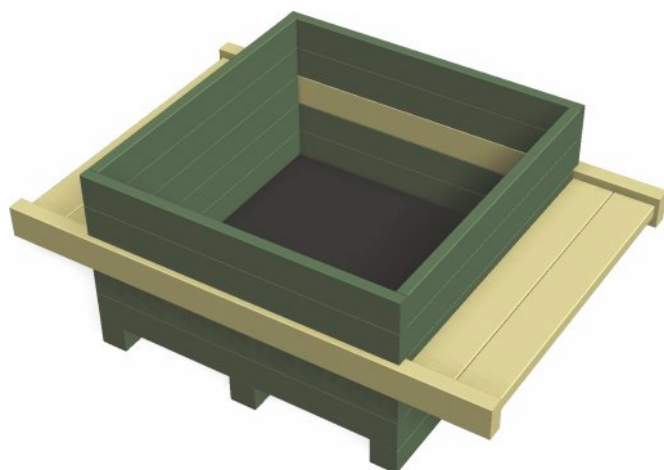
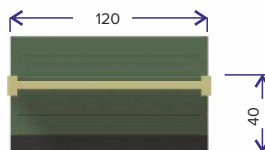
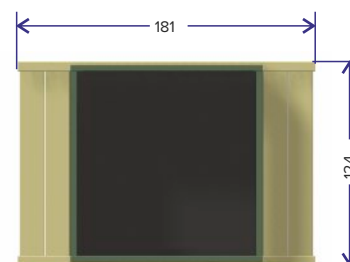


According to EN1176, this bed-bench is not considered as being a play equipment.
Therefore, a TÜV-certificate is not required.



+/- 185 kg



Material

- Solid posts and planks made of recycled plastic (PE), coloured throughout.
- Stainless steel screws and nail plugs

Mounting

The Planter-bench GP33 is delivered fully assembled.

Maintenance

Maintenance of the recycled plastic material is very limited. Cleaning with a soapy water and a sponge or soft brush. Rinse with water to remove all dirt and soap. As the water absorption of the material is less than 0,29%, it will not get stained by oil, grease and other products. Besides, mosses and algae will have difficult to adhere to the material and are very easy to remove. Cleaning with high-pressure (max. 100 bar) is possible but is not recommended and mostly not needed. If anyway, then spray with a fan-shaped jet at minimum 30 cm from the plastic surface.

Painting or staining is useless as the paint will not stick attach to the material.



Installation

The Bed-bench is delivered fully assembled. In case supervision of the playground is guaranteed, anchorage is not required.

No need for safety zone and safety surface

As this product is being considered as furniture there is no need to respect a safety zone. A safety surface is also not required.

