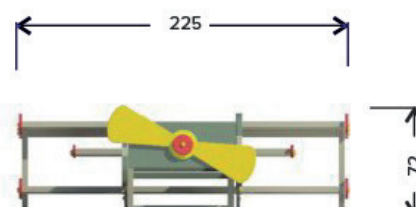
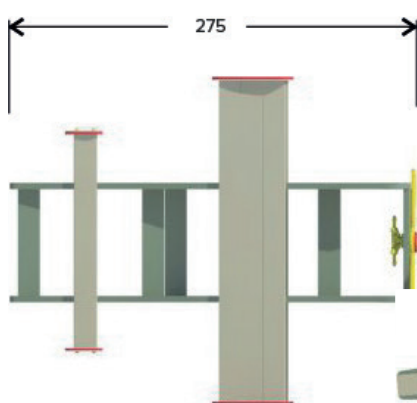




This item is TÜV certified.



+/- 200kg



Mounting

The plane is delivered in pre-assembled parts. The surface needs to be hard and even.

Maintenance

- Solid boards made of recycled plastics (PE) coloured throughout (beige, green, brown)
- Stainless steel screws (6 and 8 mm) and nail plugs
- Virgin plastic sheets (PE)
- Replaceable PE steering wheel

Maintenance

The plastic material requires very little maintenance, that is cleaning with soapy water and a sponge or soft brush and rinsing with water to remove dirt and soap. As the materials' water absorption is less than 0.29%, it will not get stained by oil, grease or other products. Moss and algae will not adhere easily and can easily be removed. Cleaning with high-pressure (max. 100 bar) is possible but not recommended and mostly even not necessary. Spray with a fan-shaped jet with minimum 30 cm distance from the surface. Painting or staining is useless as the material does not need extra protection and moreover the paint will not stick to the plastic.

Inspection Requirements

Visual inspection:

Weekly or monthly, depending on the intensity of use.

Functional inspection:

Monthly or four-monthly, depending on the intensity of use.

Detailed inspection:

Yearly

Special attention during functional or detailed inspection:

- Check all parts are tight.
- Check worn, loose, damaged, missing parts.
- Check screws sticking out.
- Check anchoring on hard soil.
- Steering wheel must be tightly secured.
- Vandalism?
- Space on the steering wheel

Use original Govaplast parts when repairing is required, to ensure the TÜV certificate remains valid.

Installation

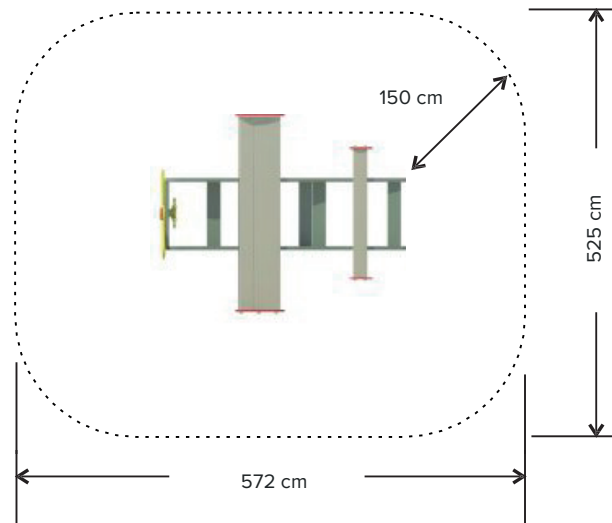
The installation needs to be done on a hard and even surface. The equipment cannot be installed on a loose surface such as a sandpit, wood chips, bark mulch), unless a special bearing construction is installed (not standard).

Security Zone

An obstacle-free area of minimum 150 cm around the equipment is required.

No fall absorption surface required

The equipment's fall height is less than 60 cm. Therefore it's allowed to install it on a hard surface.



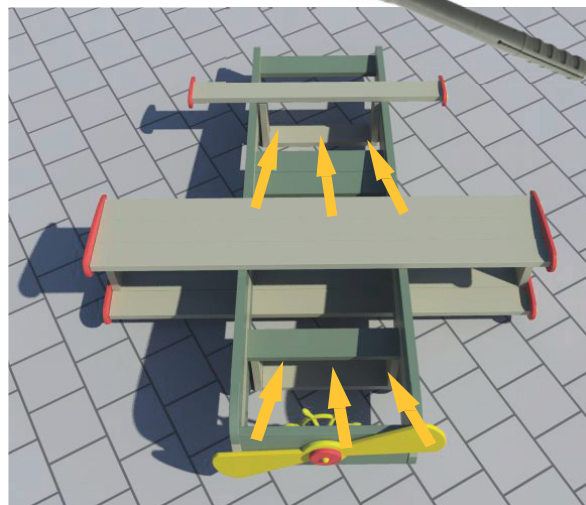
Anchoring or not?

According to the European standard, playground equipment needs to be anchored. Anchoring of this specific equipment is not required if installed on a school playground with supervision. In case the playground is only used by the school itself, the security risk due to not anchoring the equipment is relatively small. If there is no anchoring we definitely advise to mark the equipment's position on the playground in order to be able to place it back correctly after temporary relocation, respecting the required 150 cm obstacle-free area.

In case of anchoring

The equipment is anchored with the 6 nail plugs supplied, using the pre-drilled holes. Determine the exact position of the equipment, draw its outline with chalk and mark the position of the 6 pre-drilled holes for the nail plugs on the hard surface. Move the equipment. Drill the holes with a 8 mm stone drill. Move the equipment back in the right position and secure with the nail plugs. Use an angle screwdriver to facilitate screwing.

6 x



Important advice

To drill the holes use a sharp drill and first put the plastic part of the plug in the hole. Then screw the metal nail into the plug instead of hammering it. This way, you avoid damaging the head of the nail and unfixing will be easy.

Replacement steering wheels

Through intensive use, the plastic mechanism in the steering wheels is subject to wear. The wearing of the steering wheel and the other plastic parts, causes play on the system involving necessary replacement after a few years.

The steering wheel can't come loose from the green plastic mounting plate, as the cap nut is permanently glued onto the metal shaft. Replacing the whole system is not difficult though, as the green plastic mounting plate together with the steering wheel can be unscrewed from the board/post/play and a new steering system can be screwed.



Mounting of the plane



5 wing parts are to be assembled



Slide the lower part of the wing under the fuselage



The position of the wing is marked



The holes are pre-drilled.
Use the supplied screws 8 x 80 (Torx 40)



Place the wing supports



Mount the wing supports with the 2 supplied screws
8 x 120 (Torx 40) and the 2 yellow cover caps



Mount the upper part of the wing



Detail of upper wing



Detail of upper wing



Finally mount the back wing